

▼ HA Series Pneumatic Hydraulic Pumps



Motor size: 1.5/5.4KW

Maximum output pressure: 70MPa

Low pressure flow: 7/15L/Min

Medium pressure flow: 4L/Min

High pressure flow: 1/2L/Min

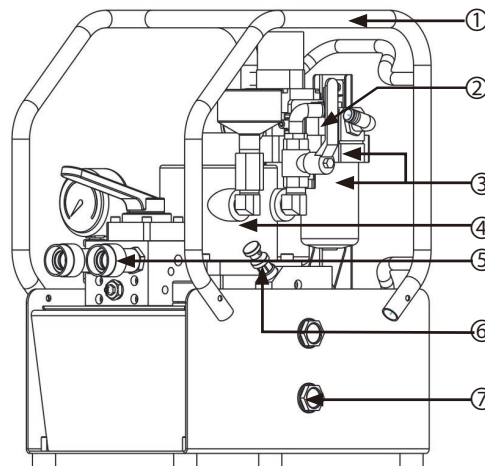
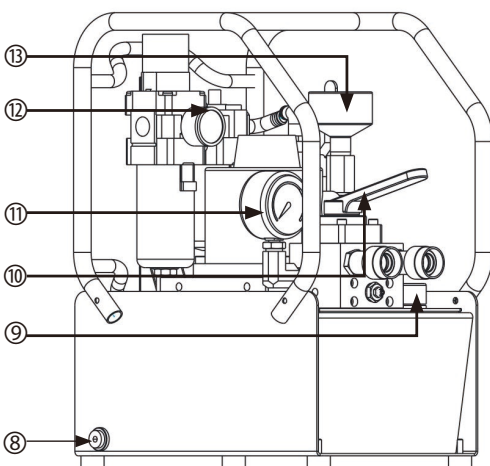
Reservoirs capacity: 7/20/40L

- Equipped with a pneumatic service unit
- Motor start ball valve for easy on/off operation
- Optional single-acting & double-acting manual directional control valves
- Built-in safety valve and external adjustable relief valve
- Standard pressure gauge and air pressure gauge
- Steel oil tank with full protective frame

▼ HA Series Pneumatic Pumps Specification Sheet:

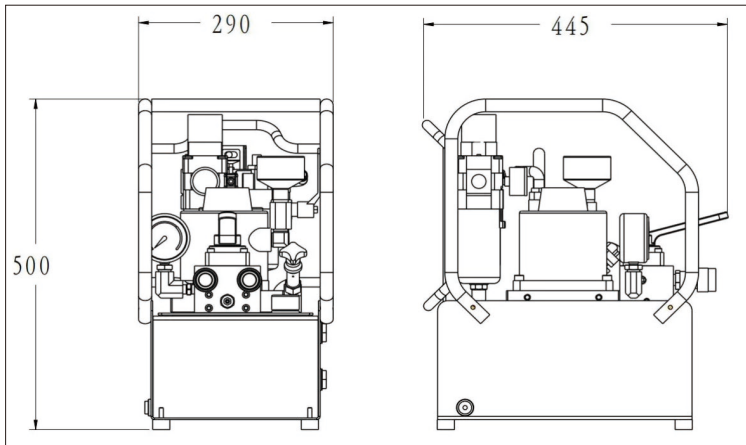
Model	Motor size	Maximum air consumption	Reservoirs capacity	Low Pressure Flow	Medium Pressure Flow	High Pressure Flow	Weight Without Oil
HA5007MV32	1.5KW	220M ³ /H	7L	7L/Min	-	1L/Min	36KG
HA5007MV43	1.5KW	220M ³ /H	7L	7L/Min	-	1L/Min	48KG
HA5020MV32	1.5KW	220M ³ /H	20L	7L/Min	-	1L/Min	48KG
HA5020MV43	1.5KW	220M ³ /H	20L	7L/Min	-	1L/Min	48KG
HA6040MV32	5.4KW	396M ³ /H	40L	15L/Min	4L/Min	2L/Min	70KG
HA6040MV43	5.4KW	396M ³ /H	40L	15L/Min	4L/Min	2L/Min	70KG

▼ HA5 Product Illustration:

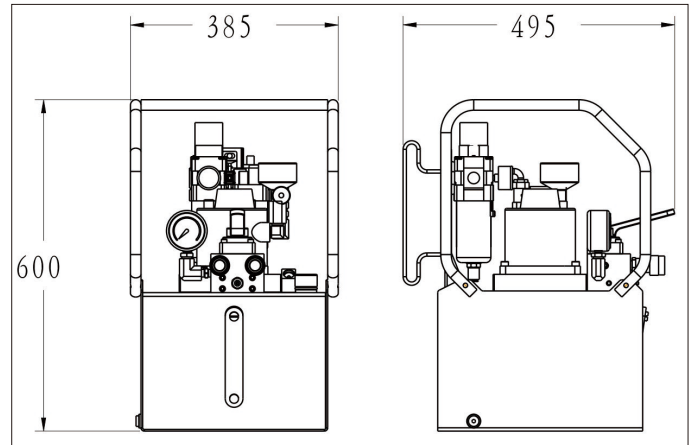


NO	Name
1	Protected Framework
2	Ball valve switch
3	triplet
4	Air Motor
5	Couplers
6	Relief Valve
7	Sight Glass
8	Oil Drain
9	Refueling And Exhaust Outlet
10	Manual Directional Valve
11	Gauge
12	Barometer
13	Suppressor

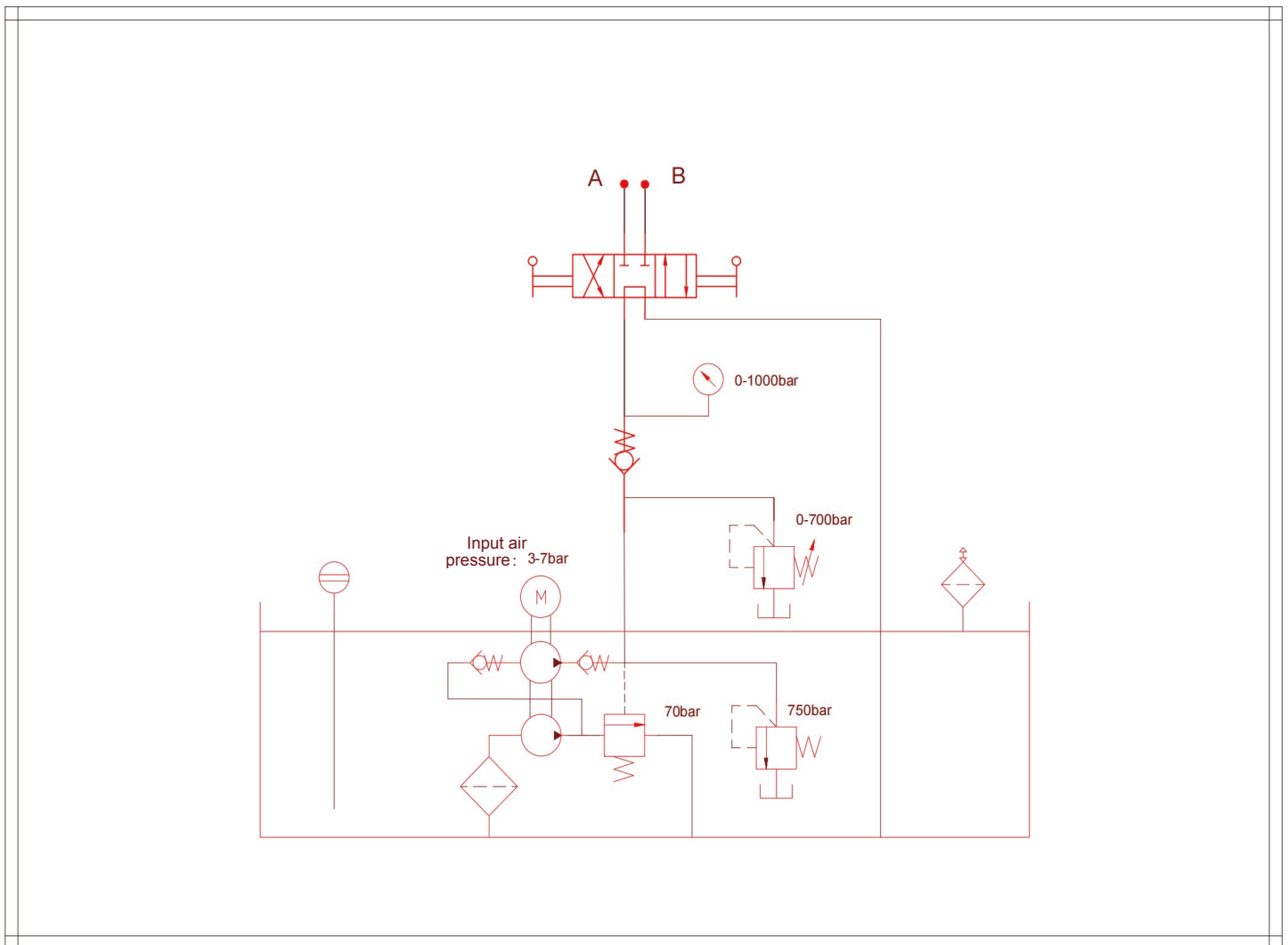
▼ HA5007MV43 Outline Drawing :



▼ HA5007MV43 Outline Drawing :



▼ HA Series Pneumatic Pump Hydraulic Schematic Diagram:



▼ HA Series Pneumatic Pump Pressure Flow Diagram :

