

▼ EX-EPW Explosion-proof Electric Ultra-high Pressure Pumps



Maximum output pressure: 150/250MPa

Motor size: 1.5KW

Low pressure flow: 3L/Min

High pressure flow: 0.2/0.35L/Min

Reservoirs capacity: 20L

- Explosion-proof design grade: Exd II BT4
- Increased safety electric control box, equipped with three-phase overload protector
- ABB explosion-proof motor
- Equipped with adjustable relief valve, pressure continuously adjustable 6M explosion-proof wire control handle
- Equipped with protection frame, lockable casters
- Two-stage pump design, low pressure fast oil supply, high pressure stable pressure boost, High efficiency
- Single/dual Oil Drain options
- 116/125 series quick plug connectors

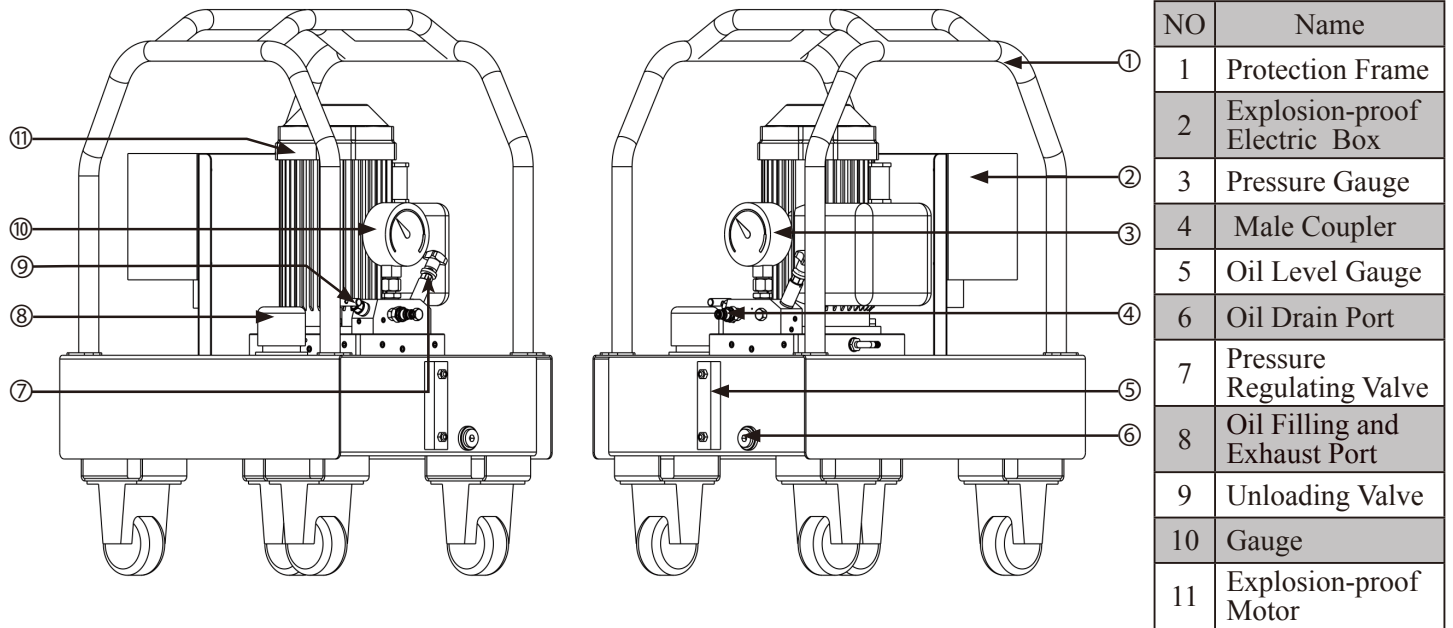
◆ EX-EPW series explosion-proof ultra-high pressure electric pump for the need of explosion-proof occasions.

◆ Can adapt to high strength conditions, suitable for harsh working environment.

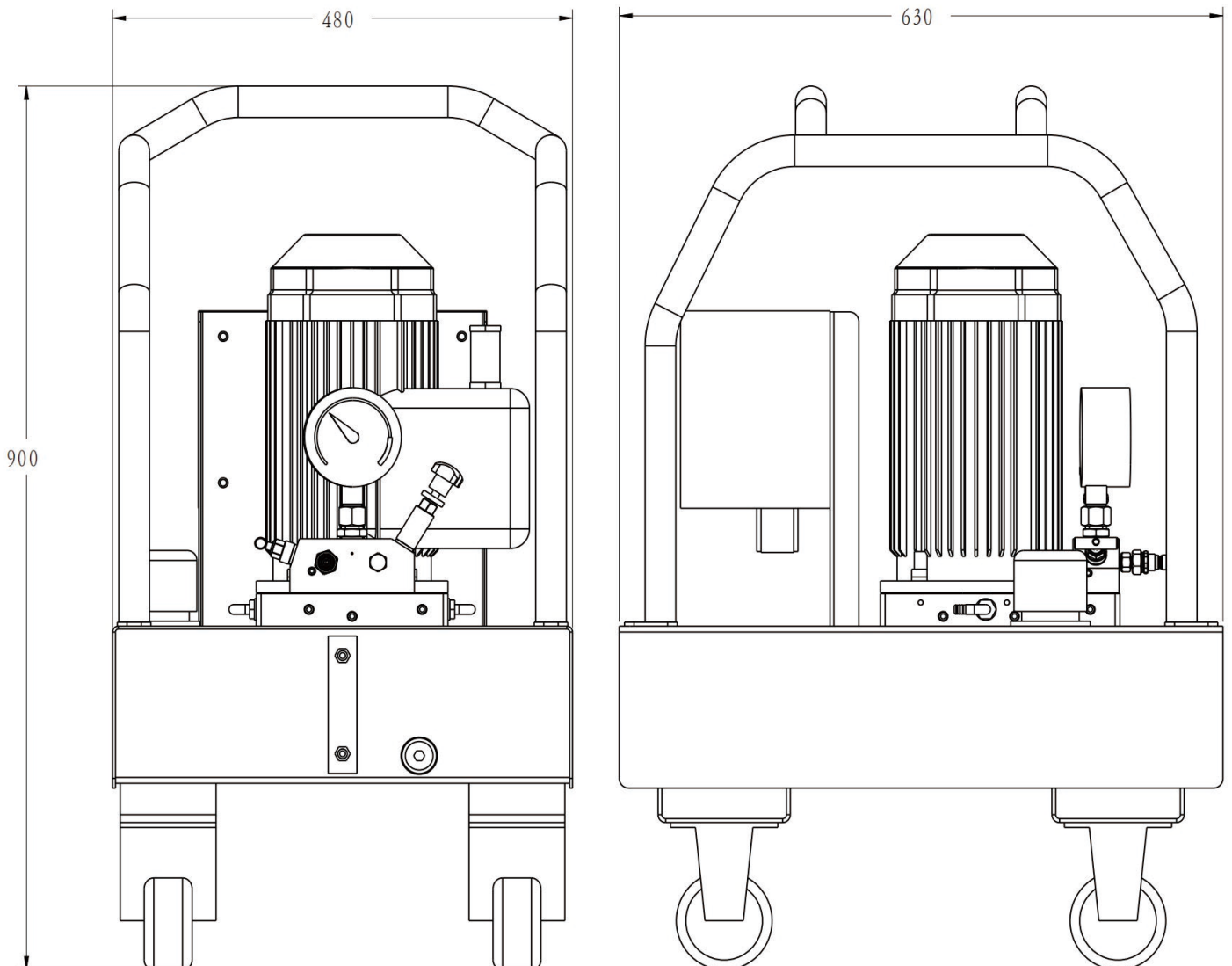
▼ EX-EPW Type Specification Sheet:

Model Number	Rated Pressure	Low Pressure Flow	High Pressure Flow	Motor size	Voltage	Noise level	Reservoirs capacity	Weight Without Oil
EX-EPW1500	1500bar	3L/Min	0.35L/Min	1.5KW	380/220VAC	80dB	20L	110KG
EX-EPW2500	2500bar	3L/Min	0.2L/Min	1.5KW	380/220VAC	80dB	20L	110KG

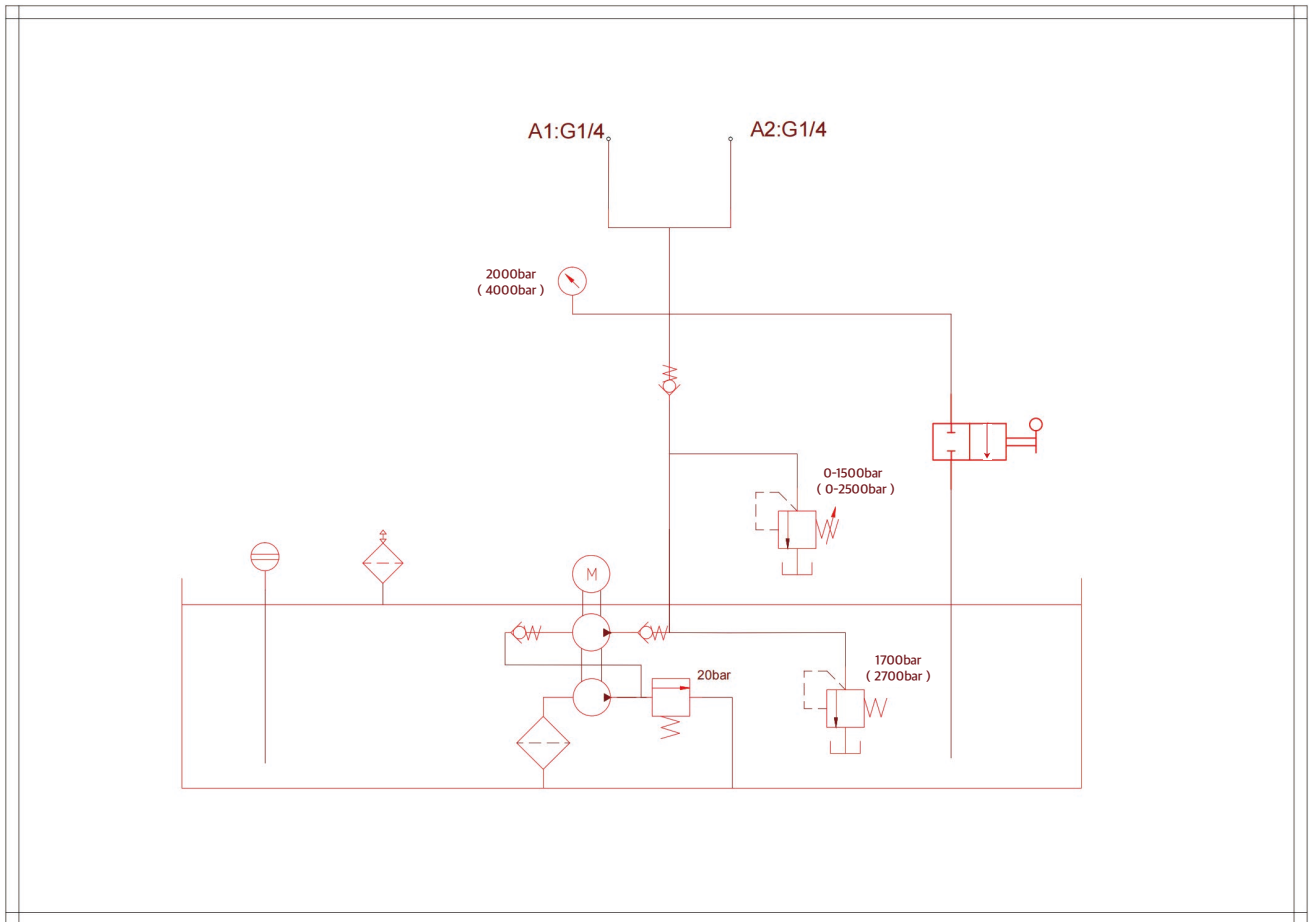
▼ EX-EPW Product Illustration:



▼ EX-EPW Outline Dimensional Drawing:



▼ EX-EPW Hydraulic Schematic Diagram:



▼ EX-EPW Pressure Flow Diagram:

